






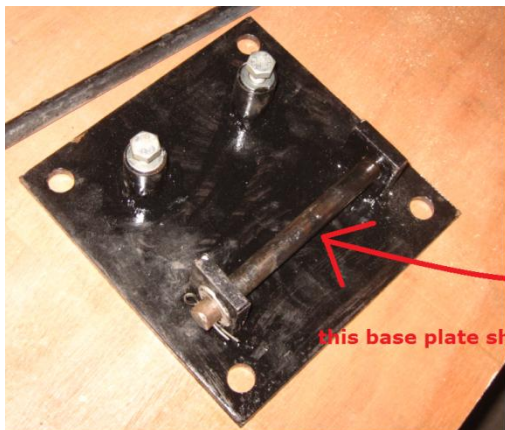
9m guy wires tower

4pcs 9-meter steel wire ropes, 4pcs flower basket bolts, 16pcs rope clamps, 8pcs chicken heart rings, 16pcs tower pole link bolts, 4pcs foundation anchor bolts, 4pcs ground anchor bolts, ground anchor plates 4 pcs, one base

	steel wire ropes
	flower basket bolts
	rope clamps
	chicken heart rings

	<p>tower pole link bolts</p>
	<p>foundation anchor bolts</p>
	<p>ground anchor bolts</p>
	<p>ground anchor plates</p>
	<p>base</p>





this base plate should be connected with tower