


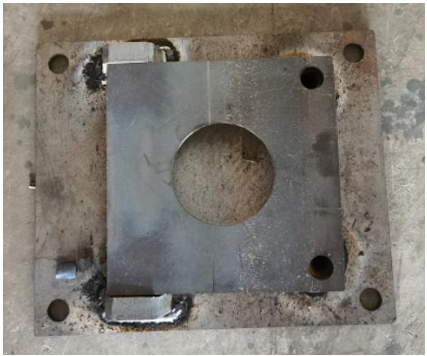


# 12m guy wires tower

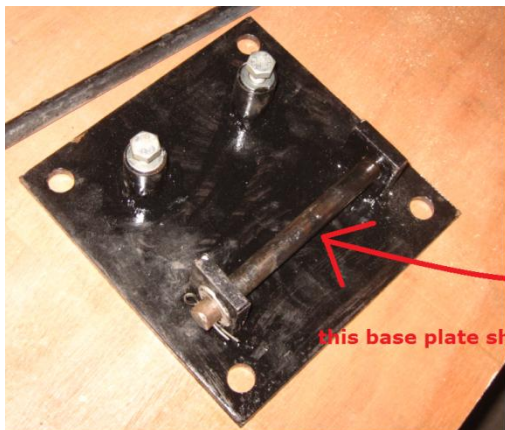
4pcs 9-meter steel wire ropes, 4pcs 12-meter steel wire ropes, 8pcs flower basket bolts, 32pcs rope clamps, 16pcs chicken heart rings, 24pcs tower pole link bolts, 4pcs foundation anchor bolts, ground anchor bolts 4 pcs, 4 pcs ground anchor plates, 1 pcs base

	<b>steel wire ropes</b>
	<b>flower basket bolts</b>
	<b>rope clamps</b>
	<b>chicken heart rings</b>

	<p><b>tower pole link bolts</b></p>
	<p><b>foundation anchor bolts</b></p>
	<p><b>ground anchor bolts</b></p>
	<p><b>ground anchor plates</b></p>
	<p><b>base</b></p>







this base plate should be connected with tower